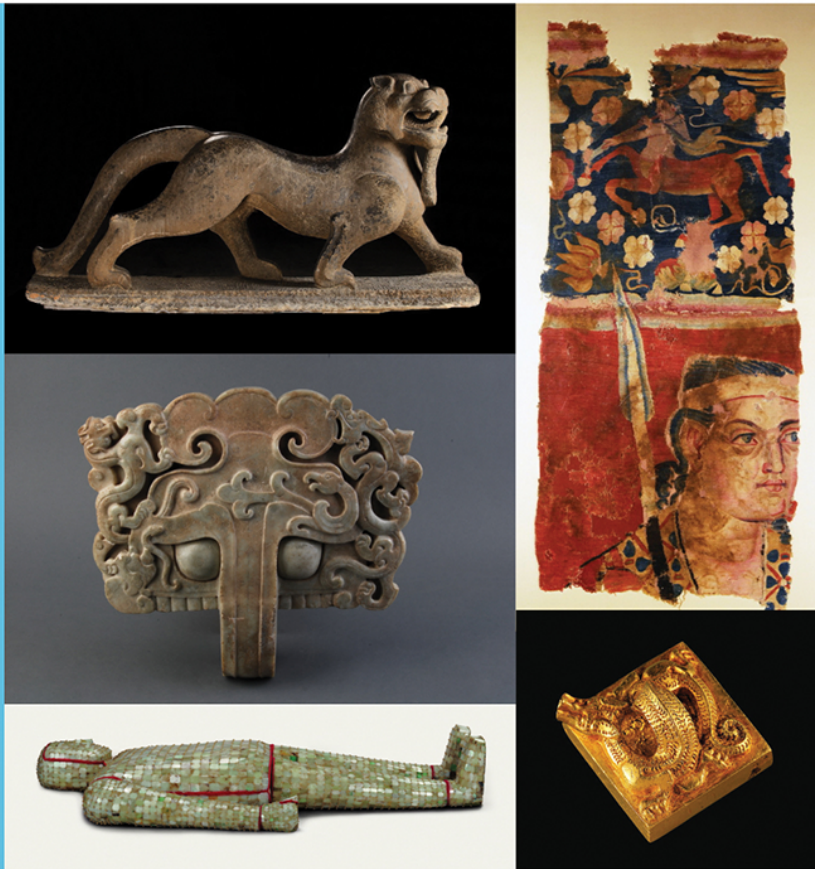


## SPECIAL GUIDED TOUR: HK Museum of History Current exhibition

Chinese Cultural Studies Center is offering a guided tour of the special exhibition, the Hong Kong Jockey Club Series, **"The Rise of the Celestial Empire: Consolidation and Cultural Exchange during the Han Dynasty"** (June 25 - October 5), at Hong Kong Museum of History. The tour will be led by Pak Long Tseung (Wuhan University, Archaeology studies).

DATE: July 25  
TIME: 1-2:30pm  
LANGUAGE: Cantonese  
PRICE: Free for tour; \$20 for exhibition admission fee

For bookings, please email [info@chineseculturalstudiescenter.org](mailto:info@chineseculturalstudiescenter.org) or call/text 9660 2639. Please include full name, email, and phone number.



### INTRODUCTION

(from website of Hong Kong Museum of History)

2015 marks the 60th Anniversary of the discovery of Lei Cheng Uk Han Tomb, the Hong Kong Museum of History organizes "The Rise of the Celestial Empire: Consolidation and Cultural Exchange during the Han Dynasty" exhibition. This exhibition aims to introduce to the public the development of the history, art and culture during the Han period by featuring a number of stunning exhibits on loan from the major cultural institutions in the Mainland.

The reign of the Han dynasty was the longest lasting and one of the greatest among all unified dynasties in China, which was influential in many aspects, including politics, art, literature, religion and science, etc. Since the Han period, Confucianism was made the main stream for the academic study and gradually as the foundation of traditional thought of the country. Besides, the exploration of trade route to the West not only laid the ground for the economic development of China for centuries, but also provided the cause for cultural exchanges and further enriched the Chinese culture. This exhibition focuses on the formation of the Han Empire, the social life of the Han people as well as the cultural exchange with the West during this period. A special emphasis is put on the development of the Lingnan region (to which Hong Kong belongs) during the two Han periods.

About 162 sets of artefacts, meticulously selected from about 40 cultural institutions in over ten provinces and cities in China, including Beijing, Guangdong, Guangxi, Yunnan, Gansu, Inner Mongolia, Henan, Hebei, Hunan, Shandong, Sichuan, Xinjiang and Shaanxi, are showcased in this exhibition. It is a very rare opportunity for the wide range of exhibits from different provinces presented altogether in Hong Kong. This exhibition lets the visitors explore the process of Chinese culture reaching its peak and the role of the Lingnan region more than 2,000 years ago.